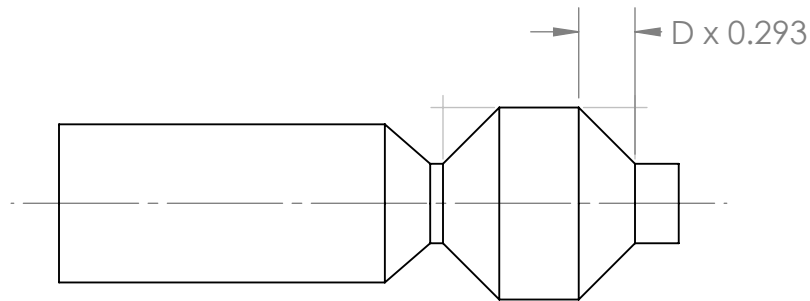
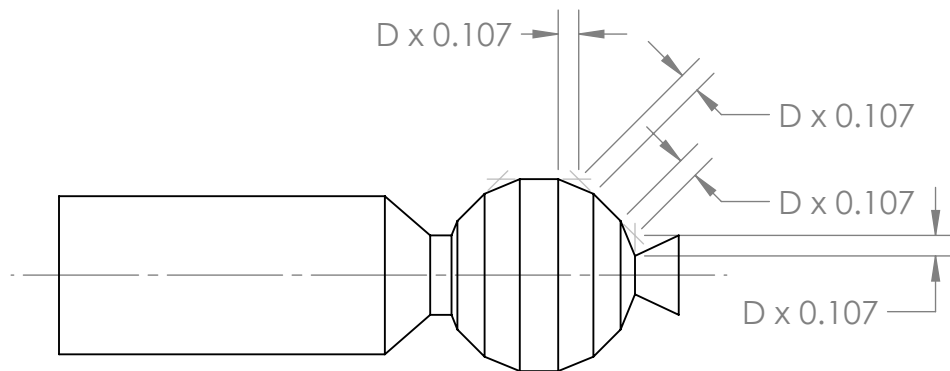


Turn a cylinder with its length the same as its diameter. The tenon diameters should be the large diameter times 0.414.



Make a mark 0.293 times the large diameter from each end and turn a straight line connecting it with the edge of the tenon (both ends).



From each of the new edges, mark a line 0.107 times the large diameter on each side. Connect those two marks with a straight line.

Now round over the new edges.